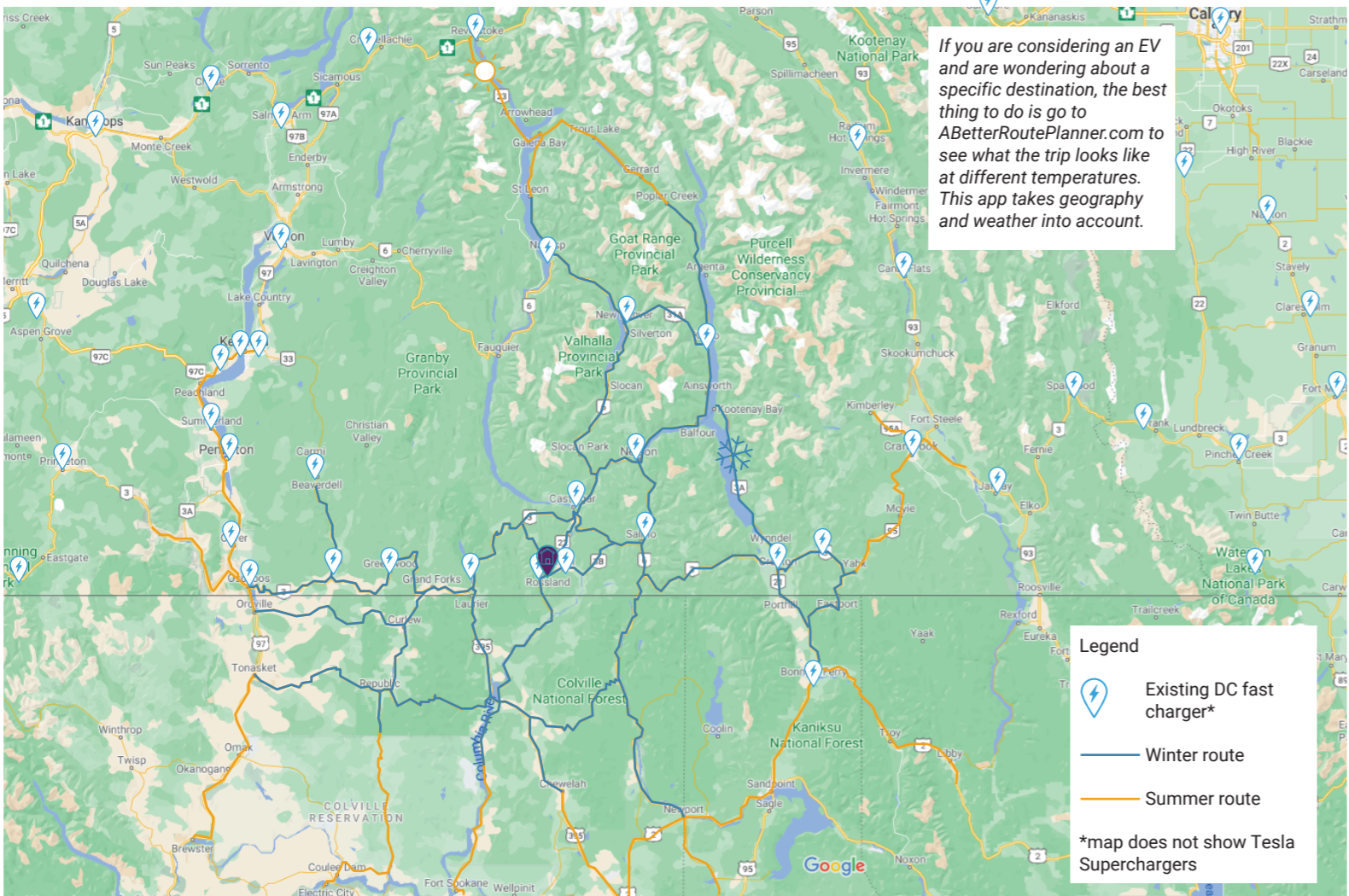


Roadtrips from Rossland: How far can an EV travel?

The map below shows approximately how far you can travel from Rossland in [summer](#) and [winter](#) in an EV*. Routes in [yellow](#) are accessible from Rossland in the summer (20°C), routes in [blue](#) are possible in the winter (-15°C, wet/snowy roads). For example, an outbound trip to Cranbrook is no problem in the summer, but in the winter if it's -15°C and snowing, you'd have to stop to charge up for about 20 minutes (depending on car make and model).

*Disclaimer: For this map we are assuming that most EVs coming to market in 2021 and beyond have at least 400kms in range in the summer. But some EVs have up to 600km of range while used EVs and those with smaller batteries may have less. Your EV's range is impacted by driving speed, geography, cargo, and weather conditions. Exact distances will vary. This map was created using [ABetterRoutePlanner.com](#) and verified by Rossland EV drivers.



What does charging look like for common destinations from Rossland?

Just like gas cars, how far you can travel is impacted by your EV model, weather, road conditions and cargo like a roof box. This list is based on EV driver experience, but can vary.



summer



winter

	summer	winter
NELSON	Roundtrip no charge needed.	Roundtrip no charge needed.
CASTLEGAR	Roundtrip no charge needed.	Roundtrip no charge needed.
NEW DENVER & KASLO	Roundtrip no charge needed.	Roundtrip no charge needed.
NAKUSP	Outbound no charge needed.	Charge stop needed for return trip.
CRESTON	Roundtrip no charge needed.	Roundtrip no charge needed.
CHRISTINA LAKE	Roundtrip no charge needed.	Roundtrip no charge needed.
OSOYOOS	Outbound no charge needed. Charge for return, 3+ options.	Outbound no charge needed. Charge for return, 3+ options.
CRANBROOK/ KIMBERLEY	Outbound no charge needed. Charge for return, 3+ options.	One charge stop needed each direction.
KELOWNA	Outbound no charge needed. Charge for return, 3+ options.	Outbound possible (at very cold temps, 1 stop may be necessary). Charge for return, 3+ options.
KELOWNA (airport)	Outbound no charge needed. Charge at airport. Charge for return, 3+ options.	One-way possible (at very cold temps, 1 stop may be necessary). Charge for return, 3+ options.